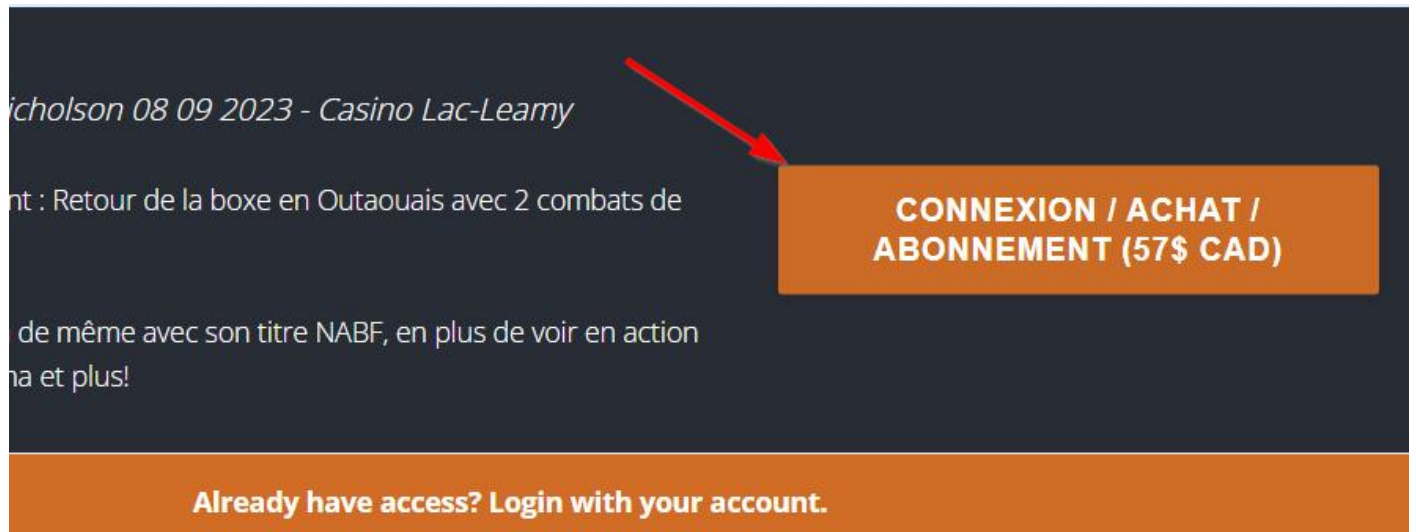


Cliquer sur le bouton Connexion ou login dans n'importe quel vidéo

Click on any connexion or login **buttons** in video page

A screenshot of a video player interface. The background is dark blue. At the top left, there is a title in white: "Nicholson 08 09 2023 - Casino Lac-Leamy". Below the title, there is a description in white: "Retour de la boxe en Outaouais avec 2 combats de... de même avec son titre NABF, en plus de voir en action... et plus!". On the right side, there is a prominent orange button with white text that reads "CONNEXION / ACHAT / ABONNEMENT (57\$ CAD)". A red arrow points from the top left towards this button. At the bottom of the video player, there is a dark orange bar with white text that says "Already have access? Login with your account." data-bbox="48 133 939 369"/>

Nicholson 08 09 2023 - Casino Lac-Leamy

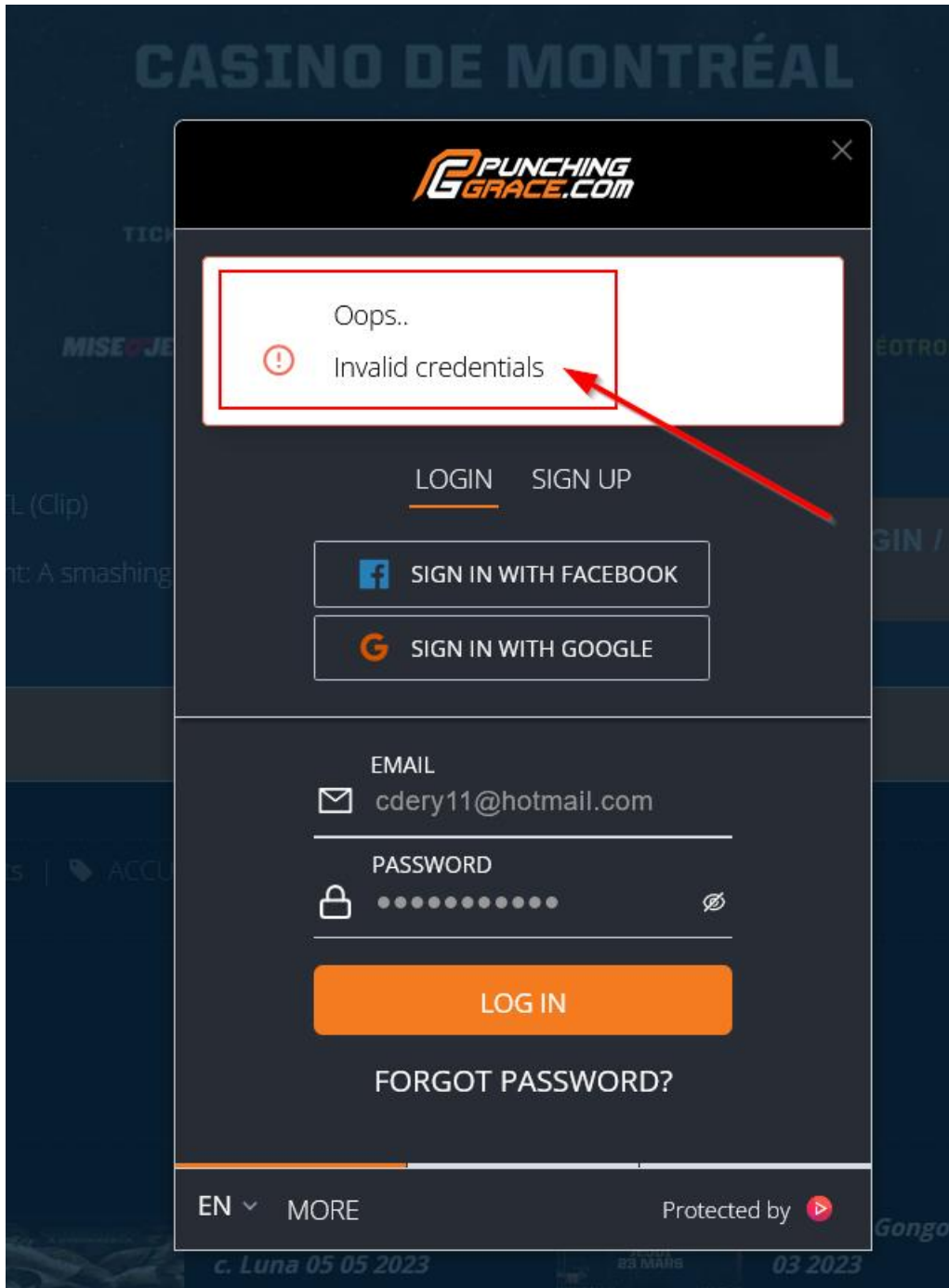
Retour de la boxe en Outaouais avec 2 combats de
de même avec son titre NABF, en plus de voir en action
et plus!

**CONNEXION / ACHAT /
ABONNEMENT (57\$ CAD)**

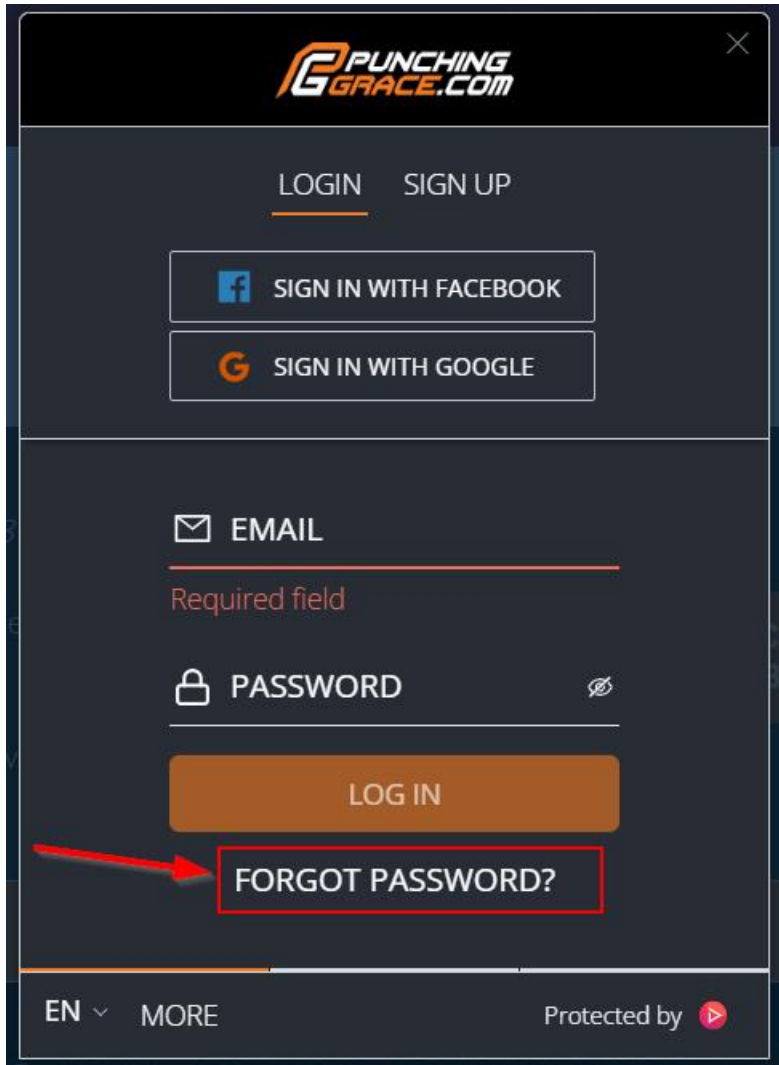
Already have access? Login with your account.

Lors de la première visite sur un vidéo après migration

On the first visit to a video after migration



...



PUNCHING GRACE.COM

LOGIN SIGN UP

SIGN IN WITH FACEBOOK

SIGN IN WITH GOOGLE

EMAIL

Required field

PASSWORD

LOG IN

FORGOT PASSWORD?

EN MORE Protected by

The image shows a login form for 'Punching Grace'. At the top, there is a logo and a close button. Below that are links for 'LOGIN' and 'SIGN UP'. There are two buttons for social login: 'SIGN IN WITH FACEBOOK' and 'SIGN IN WITH GOOGLE'. The main form has two input fields: 'EMAIL' and 'PASSWORD'. The 'EMAIL' field is marked as a 'Required field'. Below the password field is a 'LOG IN' button. A red arrow points to a 'FORGOT PASSWORD?' link, which is highlighted with a red box. At the bottom, there is a language selector 'EN' and a 'MORE' link, and a security notice 'Protected by' with a shield icon.

ENTER YOUR EMAIL

Enter your email below. If an account with that email exists, we'll email you the password reset instructions.

 EMAIL


Required field

← BACK

SEND

REMEMBER PASSWORD?

ENTER YOUR TOKEN

 We've emailed you a reset token.
Please check your inbox to proceed.

 TOKEN

 NEW PASSWORD

 REPEAT NEW PASSWORD

cancel

SET

I DIDN'T GET AN EMAIL!

Your password reset token



merchant <noreply@inplayer.com>
A [REDACTED]



Hi [REDACTED],

Your password reset token is:

4b1141b2c917a00e

This is **not** your new password.

Please go back to the page with the password reset form and paste this token in the *Token* field.

You can then enter and confirm your new password.

If you did not request a password reset, please ignore this email. Your password will not be changed.

For more help and info, please visit our [Support Center](#).

This is an automated email. Please do not reply to this message.

ENTER YOUR TOKEN

⚠ We've emailed you a reset token.
Please check your inbox to proceed.

TOKEN
 4b1141b2c917a00e

NEW PASSWORD


REPEAT NEW PASSWORD


cancel

SET

I DIDN'T GET AN EMAIL!

Success



Your password has been successfully reset.

LOGIN SIGN UP



SIGN IN WITH FACEBOOK



SIGN IN WITH GOOGLE

EMAIL



[Redacted email address]

PASSWORD



.....



LOG IN



[FORGOT PASSWORD?](#)